



CORNERSTONE  
DEVELOPMENT



**“We know that luxury isn’t just about what you own, it’s about how you feel. So in the form and function of every space we create, we look for those details - large and small - that will elevate and enrich the everyday.”**

Eng. Ashraf Boulos  
Chief Executive Officer

**30** *Years of Development & Construction*

## *30 Years of Engineering & Consultancy*

**“The secret of our success relies on the creativity, integrity, and talents of our staff. Perfection is what we strive for; it is the only standard worth working towards.”**

Eng. Mourad Shenouda  
Chief Operating Officer



# 30 *Years of Development & Construction*



Eng. Ashraf Boulos  
Chairman & CEO



Eng. Mourad Shenouda  
COO



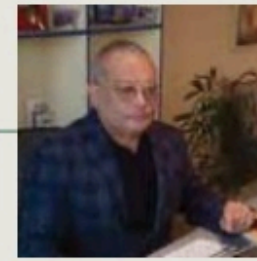
Eng. Riad R. Riad  
CEO R.Construction



Mr. Magdi Kassabgui  
CEO United-R



Mr. Shaheer Mina  
CEO Techno Gulf



Dr. Ahmed Hosny  
CEO Copad Group



Mrs. Hadia Ghabbour  
CEO Sadco



# THE NEW CAPITAL FACILITIES

NAC IS ALIVE!

---



SKYSCRAPER, ICONIC TOWER



MINISTRIES



PARLIAMENT



OPERA, ART & CULTURE VILLAGE



SPORTS HUB



THE NAC MUSEUM



BANK MISR & MANY OTHERS



GIU UNIVERSITY & MANY OTHERS



NAC ENGLISH SCHOOL



SEVEN PILLARS  
INTERNATIONAL SCHOOL



CONVENTRY UNIVERSITY



THE NAC HOSPITAL



NAC LIBRARY



MONORAIL

AND MANY MORE



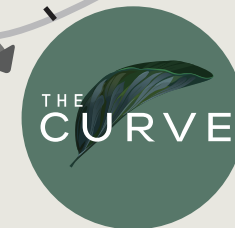
# THE CORNER

THE CORNERSTONE OF THE NEW CAPITAL



# THE NEW CAPITAL MAP

## THE CURVE COMPOUND



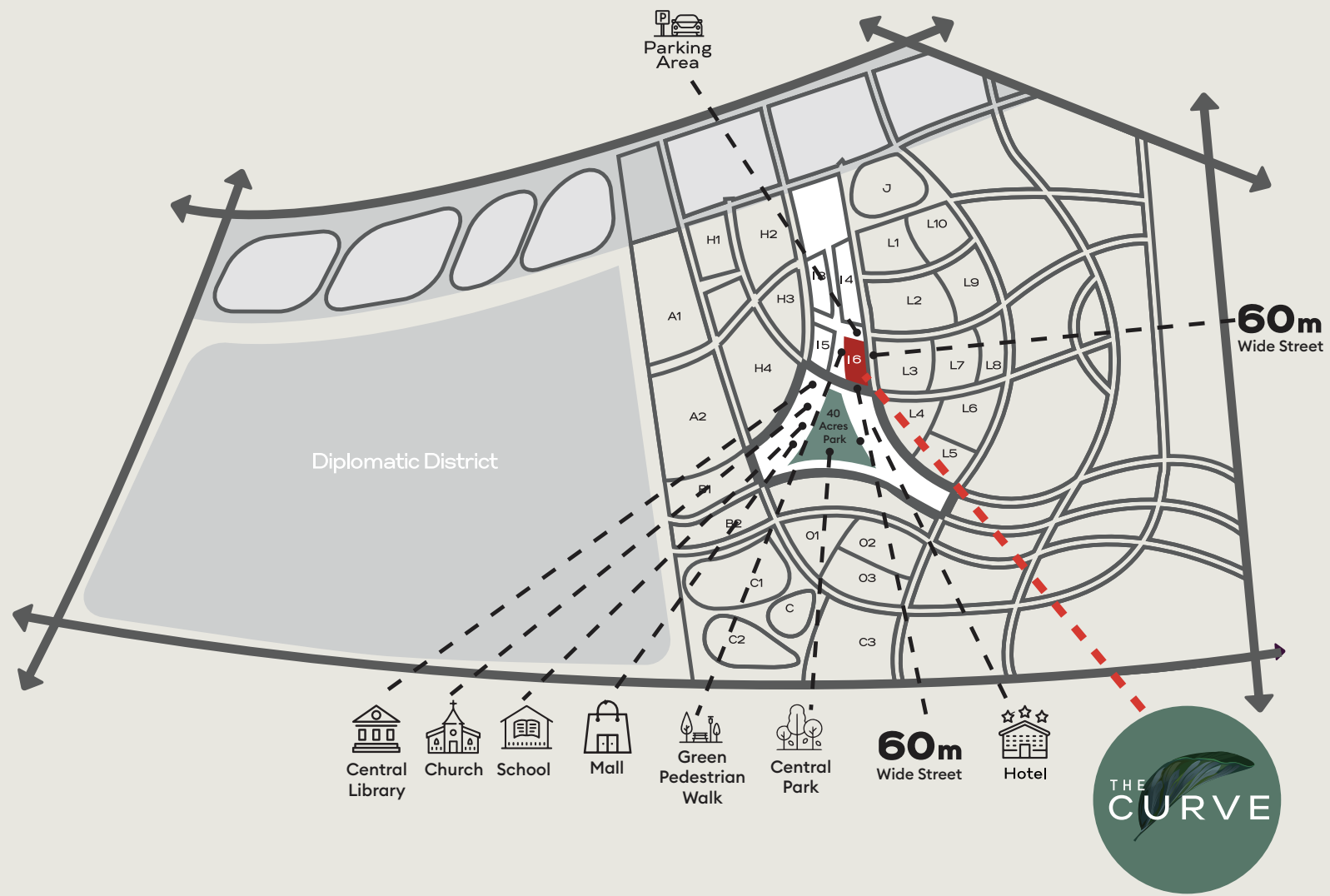
- 2 km from Bin Zayed South Axis
- 7 km from Bin Zayed North Axis
- 9 km from Regional Ring Road
- 12 km from Cairo / Ain El Sokhna Road

- 13.5 km from Al Amal Axis
- 25 km from Middle Ring Road
- 25 km from Cairo/ Suez Road



# MAP R8

## THE CURVE COMPOUND



# MAP I6

## THE CURVE COMPOUND

---





Cassia

Bonsai

Lantana

Cactus

1- Commercial Strip

4- Gallery Garden

2- Clubhouse

5- Tree Lounge

3- Social House





# THE CURVE COMPOUND



540 UNITS



# THE CURVE COMPOUND





# ARCHITECTURAL NEW YORK DESIGN





# ARCHITECTURAL NEW YORK DESIGN





## ULTRA-MODERN LANDSCAPE





## The Curve Construction Updates





## The Curve Construction Updates





## The Curve Construction Updates





## The Curve Construction Updates





## BUILDING ENTRANCE



A modern interior scene featuring two large, white, tufted ottomans with gold-colored metal frames. In the foreground, a low, rectangular coffee table with a white marble top and gold-colored metal legs is visible. The floor is covered with a large, light-colored rug with a subtle, abstract pattern. The background shows a minimalist room with concrete pillars and a white wall.

**80% FLEXI-FINISHING**



# 80% FLEXI-FINISHING

The Curve will provide you with all the necessities to a life of comfort with its services linup.



Application of mosaic tiles for flooring. Ready to install HDF or Porcelain.



Installed ceramic tiles for floors & walls in bathrooms & kitchens.



Piping is set. Appliances are ready to be added in all kitchens & bathrooms.



Frames are ready & installed on all internal doors.



Established internal piping for all electrical supplies & units



Walls are ready to add the final coat.



Fencing plants for Ground Floor Gardens.



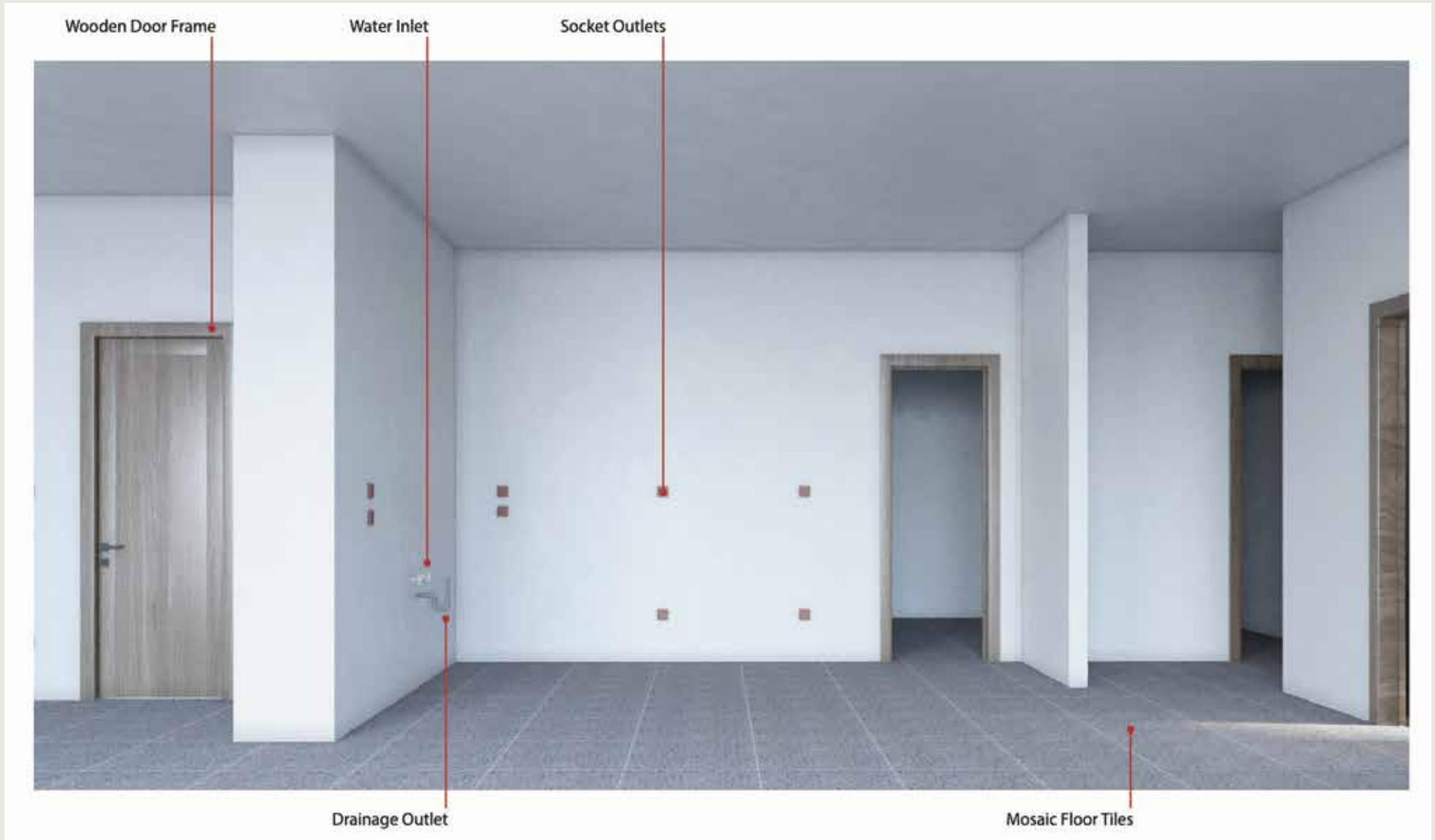
Flooring tiles & handrails for terraces.



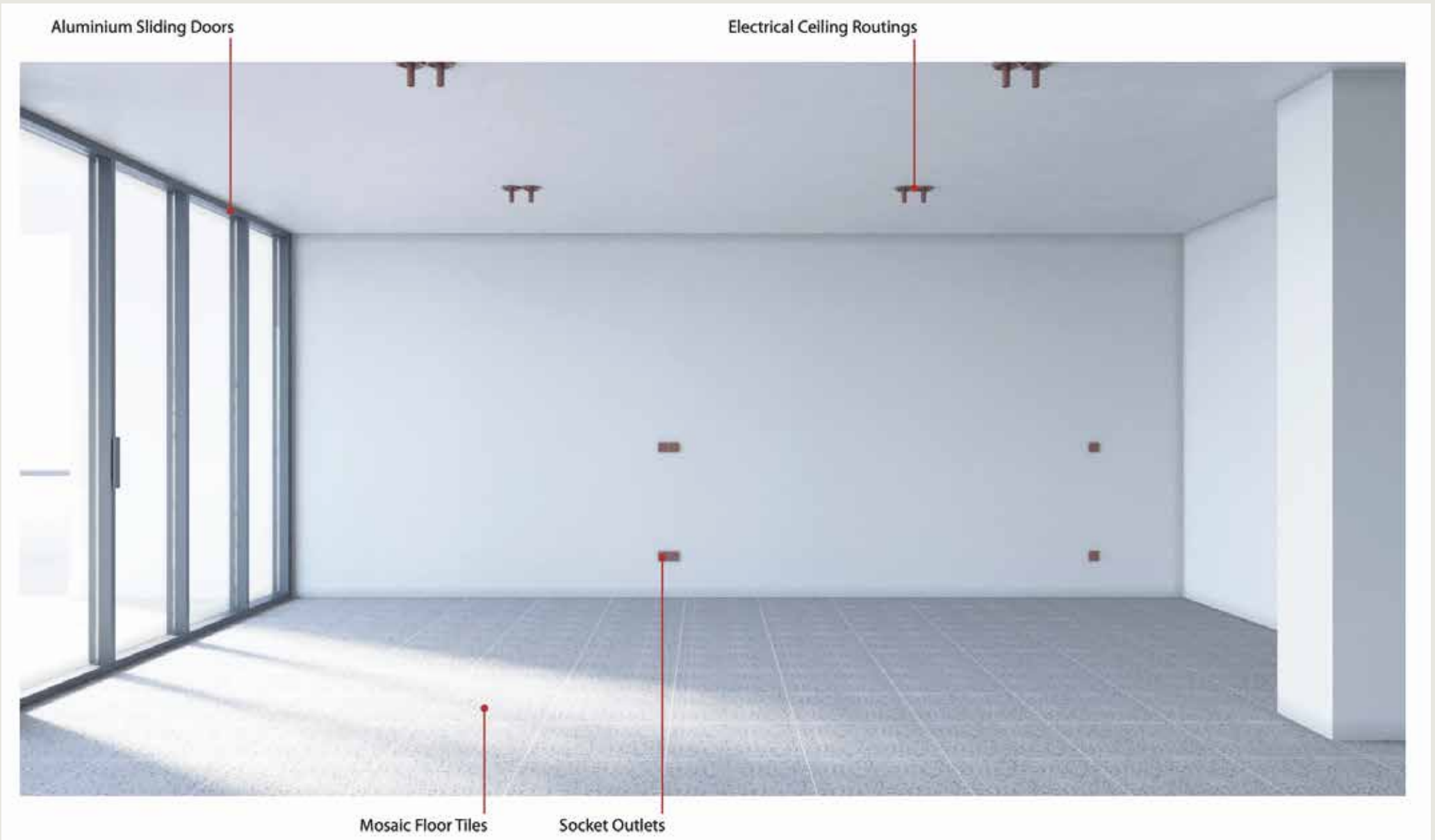
Fully installed windows.



# 80% FLEXI-FINISHING



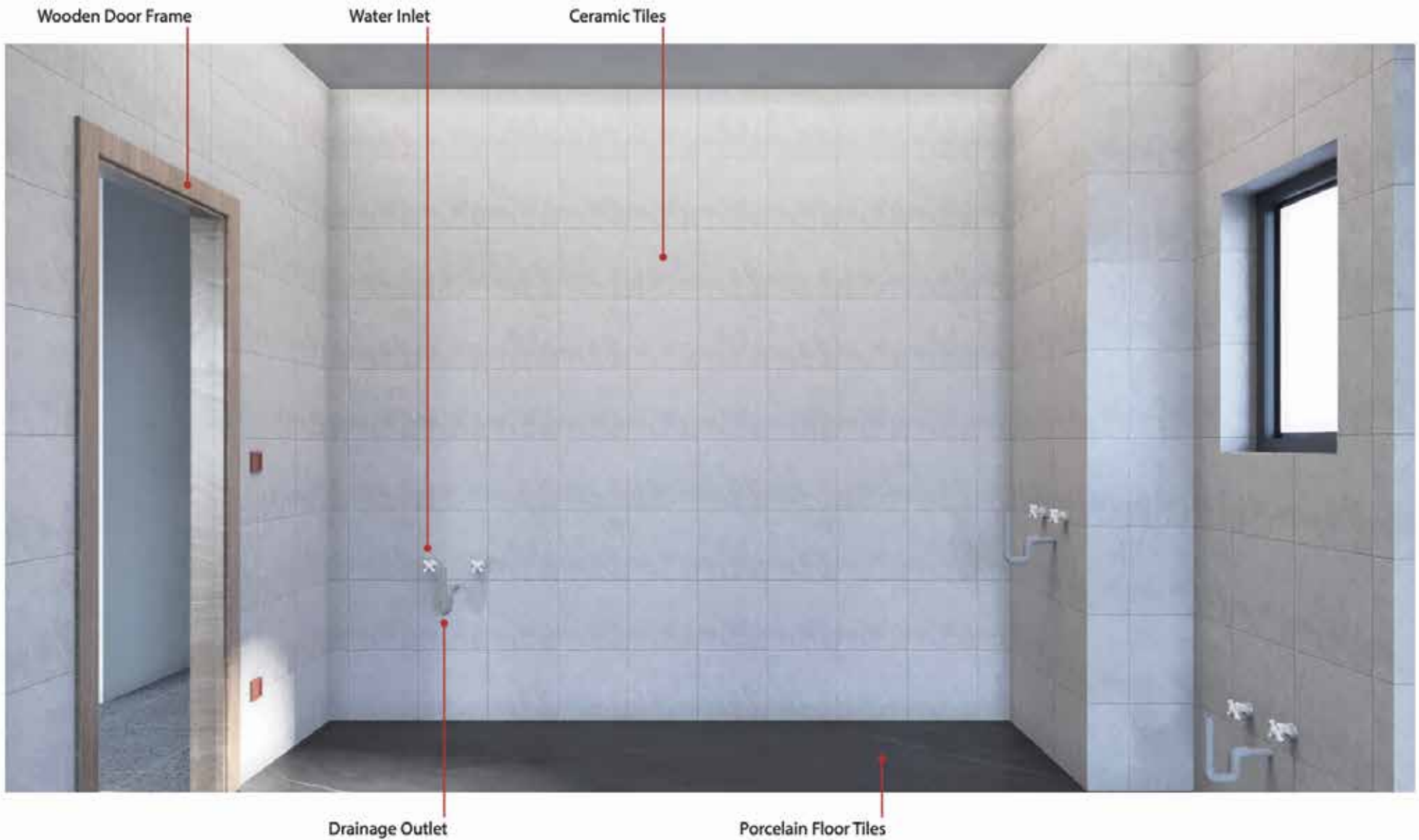
# 80% FLEXI-FINISHING



# 80% FLEXI-FINISHING



# 80% FLEXI-FINISHING





# SERVICES



Solar Energy



Concierge



Security



Garbage Chute



Housekeeping



Maintenance



## TREE LOUNGE, FOR MULTI-PURPOSES





## GARDEN DUPLEX UNIT



## INTERIOR GARDEN UNIT





## DOUBLE HEIGHT DUPLEX



## OPEN KITCHEN, GARDEN UNIT





## APARTMENT UNIT



## APARTMENT UNIT





## LOFT DUPLEX, 6th & 7th FLOOR





## LOFT DUPLEX, DOUBLE HEIGHT



## LOFT DUPLEX, 6th & 7th FLOOR





## GALLERY GARDEN





## GALLERY GARDEN







# AMENITIES



# SOCIAL HOUSE



## APERITIVO CORNER





# LISTENING LIBRARY



## ALFRESCO BARBECUE & GRILL





## ALFRESCO KITCHEN



RESERVE OUR ALFRESCO KITCHEN FOR A BBQ, MATCH OR ANY KIND OF GATHERING

## ALFRESCO LOUNGE





## KIDS AREA & NURSERY



## CINEMA ROOM





# CLUBHOUSE



# CLUBHOUSE





## GYM, CLUBHOUSE





## INDOOR / OUTDOOR HEATED POOL





## YOGA & SPA





# THE COMMERCIAL STRIP





# THE COMMERCIAL STRIP



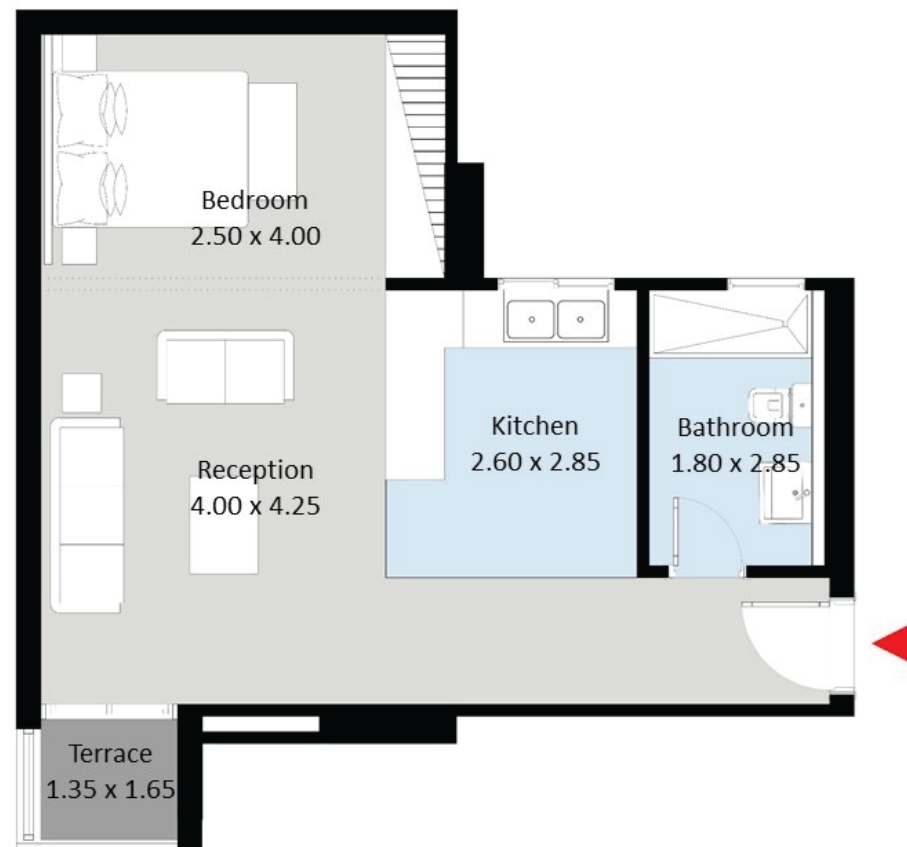
# THE CURVE'S UNIT TYPES

TYPE	FROM	TO
STUDIO	65 SQM	—
1 BEDROOM	82 SQM	93 SQM
2 BEDROOMS	118 SQM	192 SQM
3 BEDROOMS	159 SQM	210 SQM
4 BEDROOMS	257 SQM	279 SQM
DUPLEX & LOFTS	287 SQM	500 SQM



## 1 BEDROOM APT

---



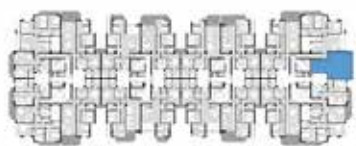
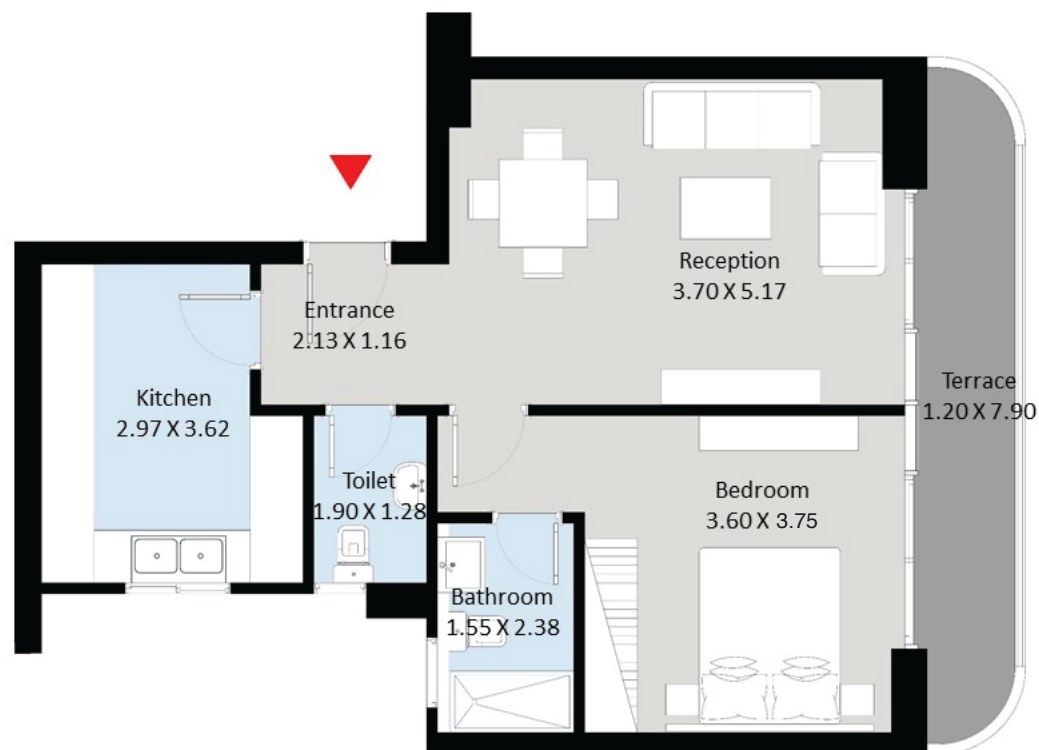
### Upper Floor Apartment

Gross Area 65 m<sup>2</sup>

Terrace Area 3 m<sup>2</sup>

## 1 BEDROOM APT

80-90 m<sup>2</sup>



### Upper Floor Apartment

Gross Area 89 m<sup>2</sup>

Terrace Area 9 m<sup>2</sup>



## 2 BEDROOM APT

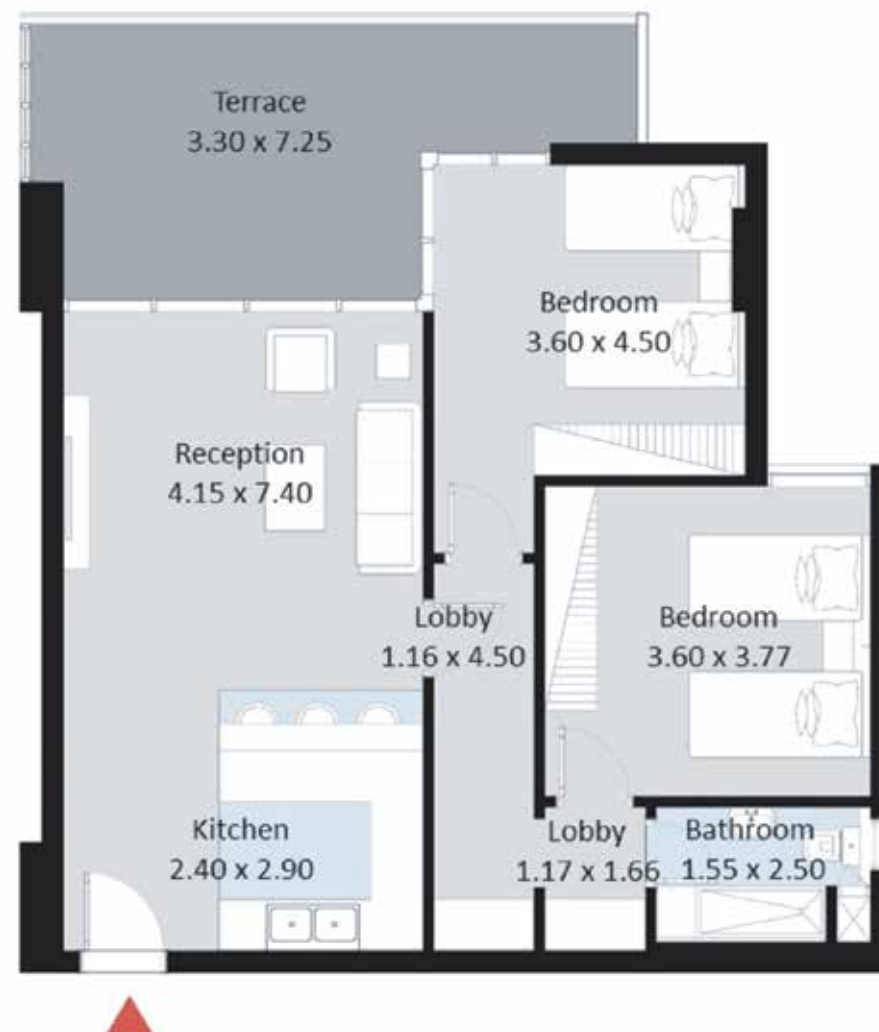
117-125 m<sup>2</sup>



### Upper Floor Apartment

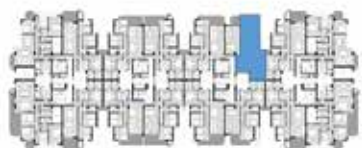
Gross Area 124 m<sup>2</sup>

Terrace Area 19 m<sup>2</sup>



## 2 BEDROOM APT

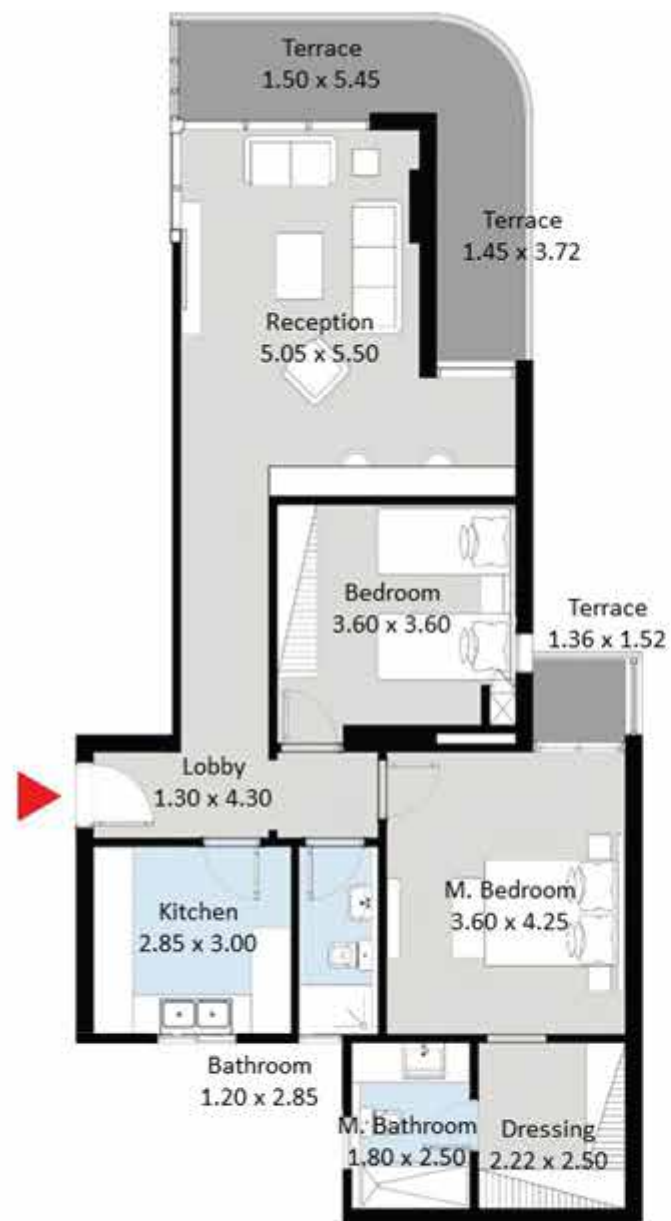
125-140 m<sup>2</sup>



### Upper Floor Apartment

Gross Area 140 m<sup>2</sup>

Terrace Area 17 m<sup>2</sup>

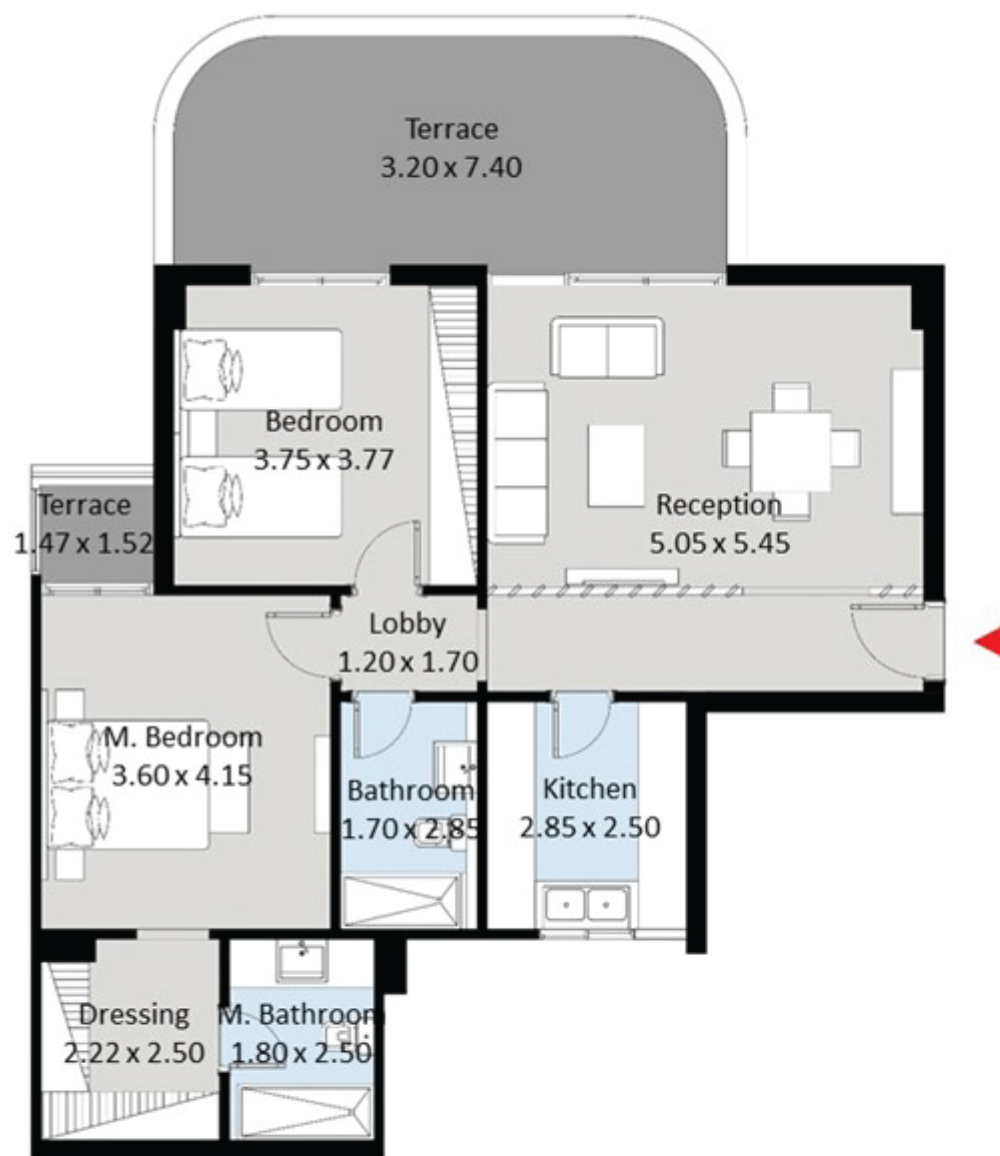




## 2 BEDROOM APT

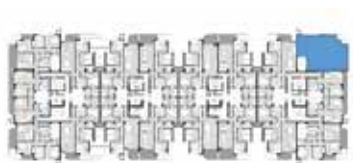
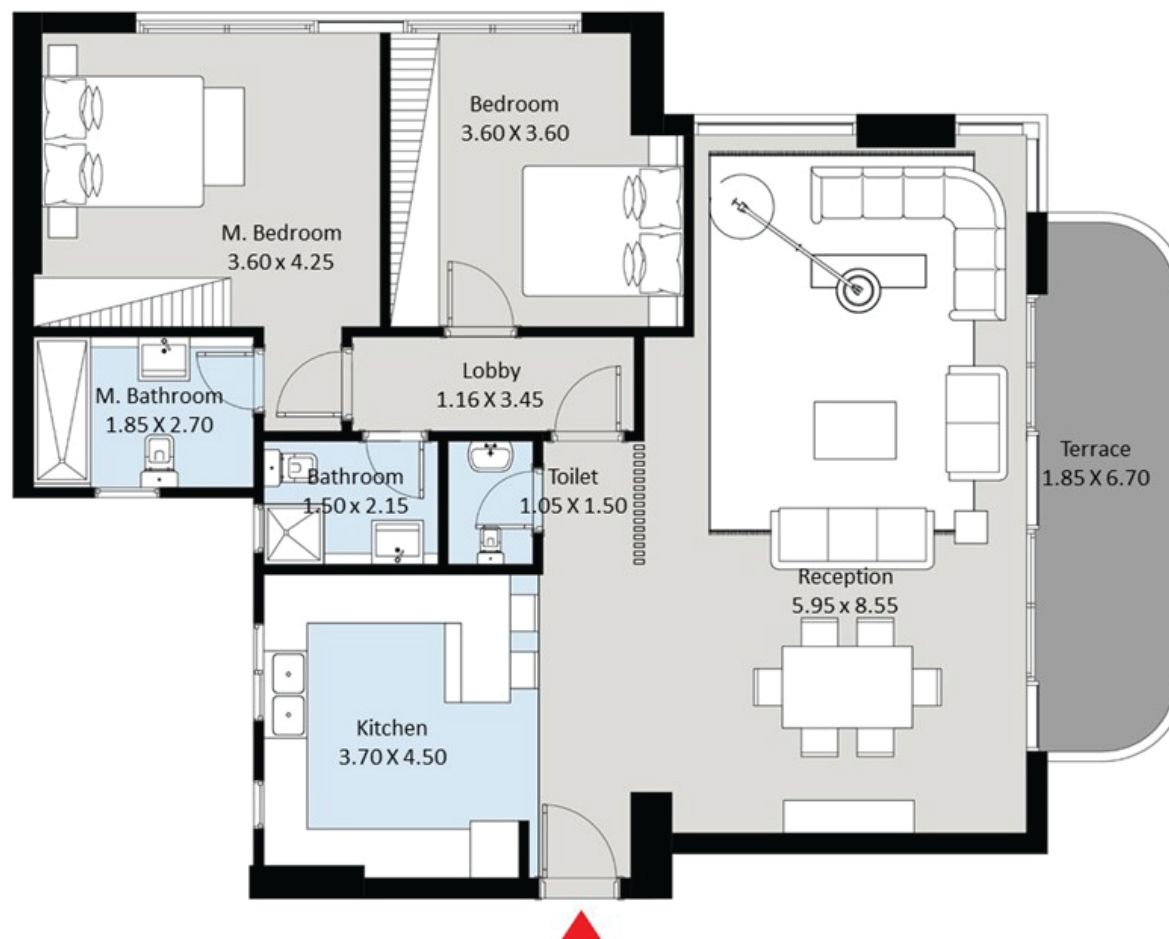


**Upper Floor Apartment**  
Gross Area 148 m<sup>2</sup>  
Terrace Area 26 m<sup>2</sup>



## 2 BEDROOM APT

158-165 m<sup>2</sup>



### Upper Floor Apartment

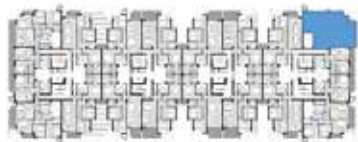
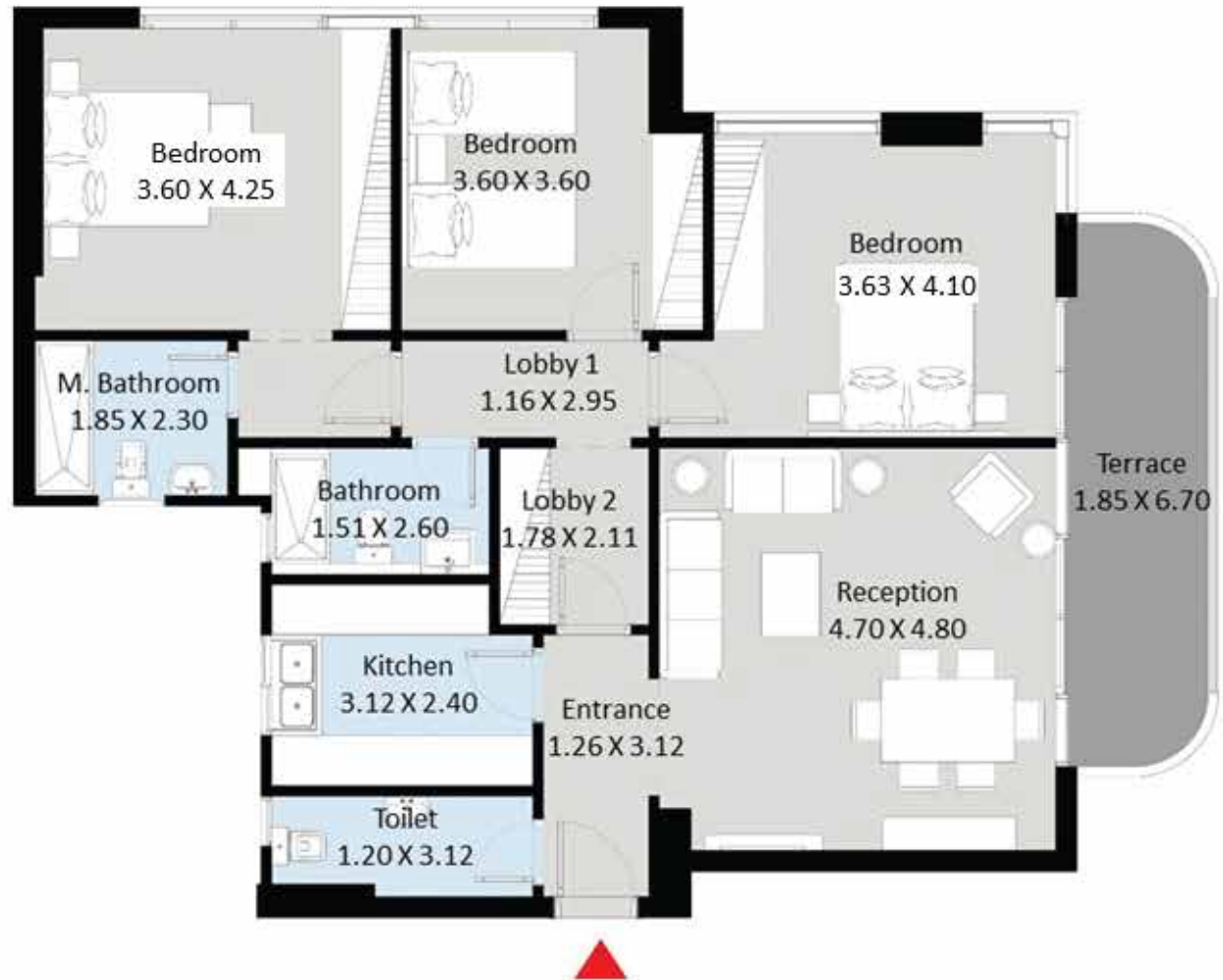
Gross Area 158 m<sup>2</sup>

Terrace Area 12 m<sup>2</sup>



## 3 BEDROOM APT

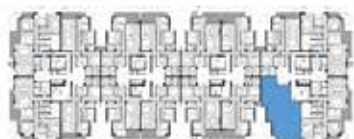
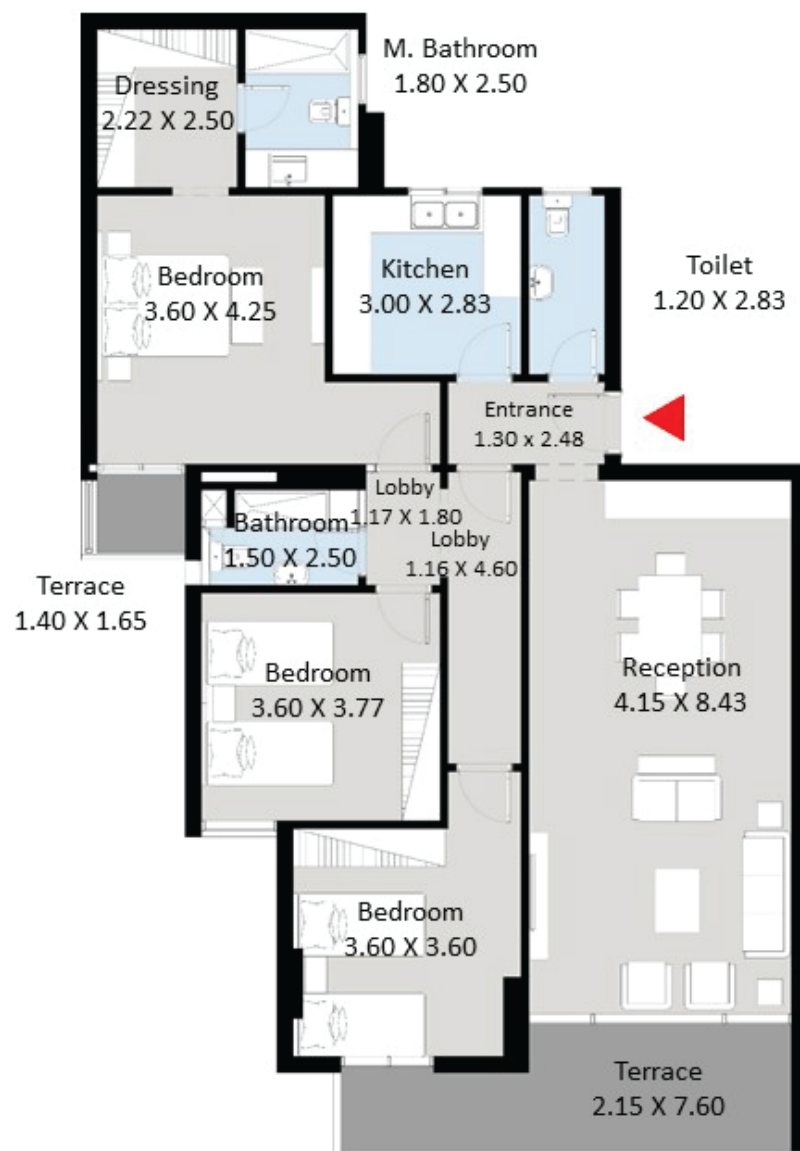
158-167 m<sup>2</sup>



Upper Floor Apartment  
Gross Area 158 m<sup>2</sup>  
Terrace Area 12 m<sup>2</sup>

## 3 BEDROOM APT

180-190 m<sup>2</sup>- OPTION 1



### Upper Floor Apartment

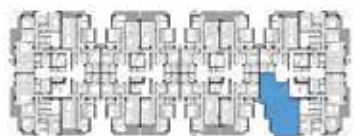
Gross Area 189 m<sup>2</sup>

Terrace Area 16 m<sup>2</sup>



## 3 BEDROOM APT

180-190 m<sup>2</sup>- OPTION 2



### Upper Floor Apartment

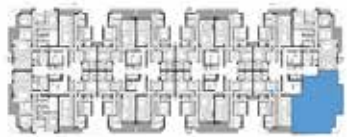
Gross Area 189 m<sup>2</sup>

Terrace Area 16 m<sup>2</sup>



## 3 BEDROOM APT

213-220 m<sup>2</sup>



Upper Floor Apartment  
Gross Area 213 m<sup>2</sup>  
Terrace Area 16 m<sup>2</sup>





## 3 BEDROOM APT

240-253 m<sup>2</sup>



### Upper Floor Apartment

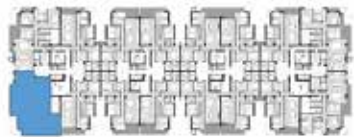
Gross Area 252 m<sup>2</sup>

Terrace Area 34 m<sup>2</sup>



## 3 BEDROOM APT

245-258 m<sup>2</sup>



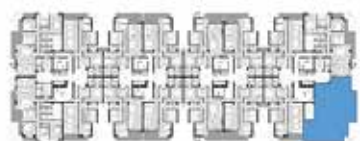
Upper Floor Apartment  
Gross Area 258 m<sup>2</sup>  
Terrace Area 32 m<sup>2</sup>



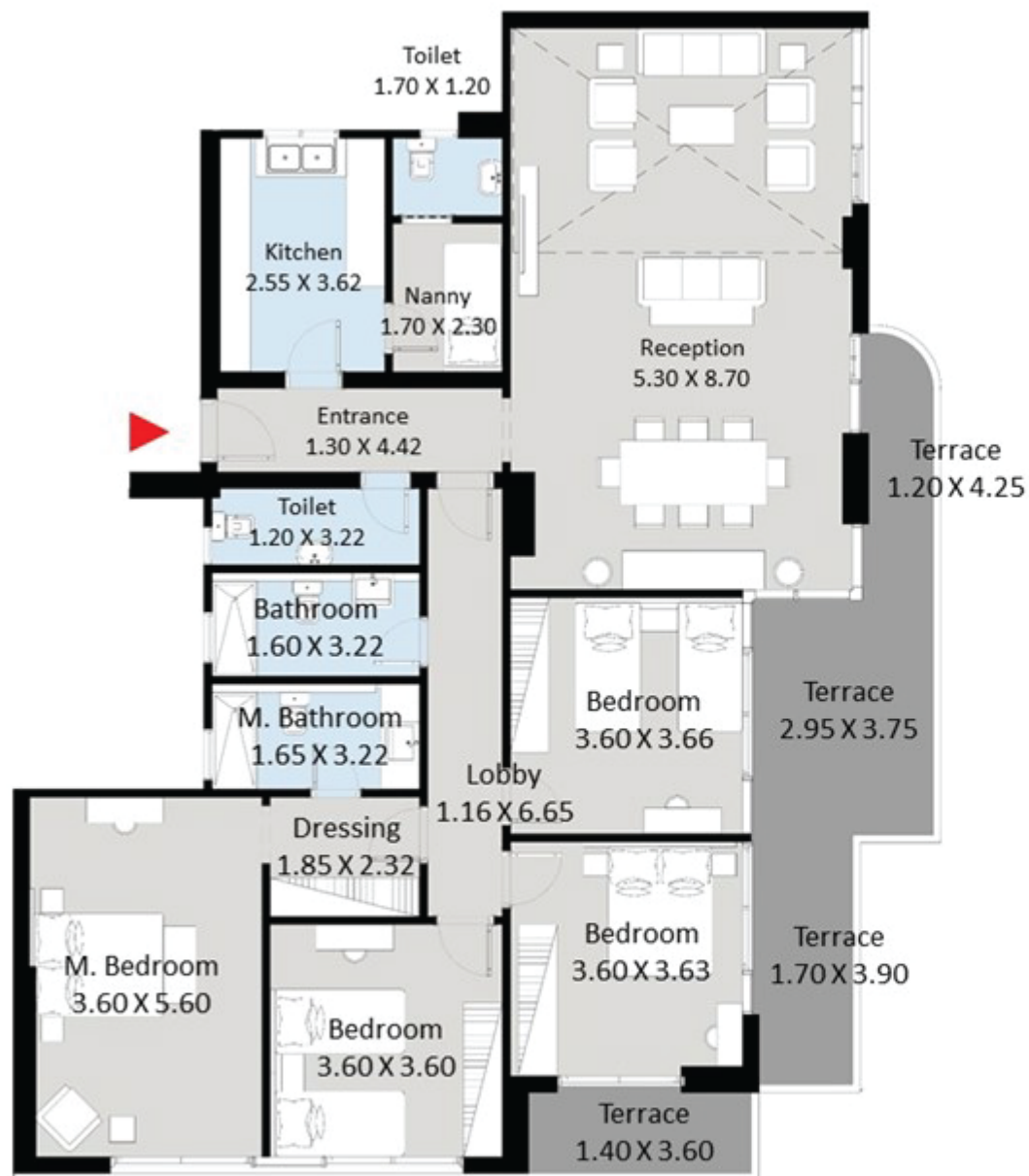


## 4 BEDROOM LOFT

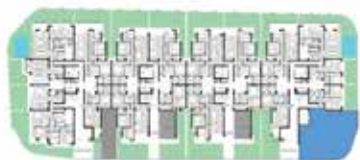
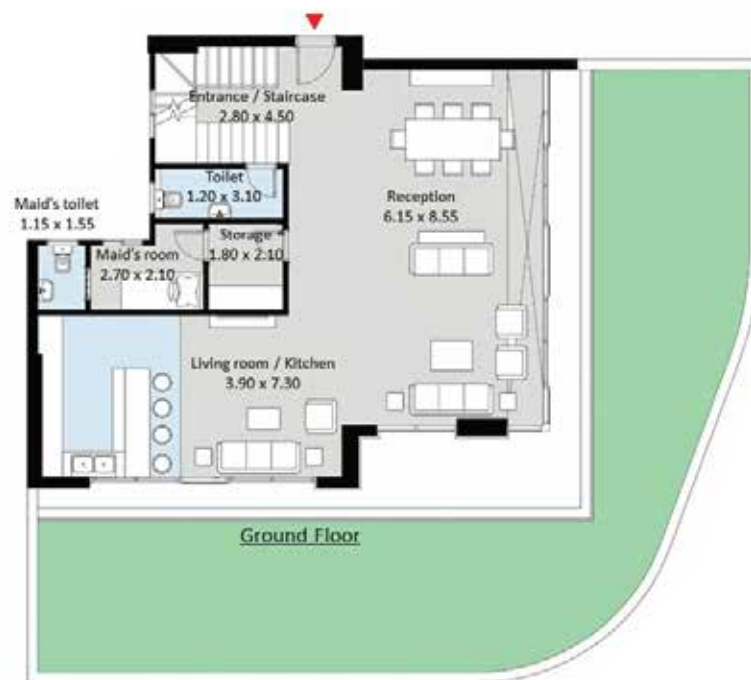
280 m<sup>2</sup> (Double-Height)



**Upper Floor Loft**  
Gross Area 280 m<sup>2</sup>  
Terrace Area 28 m<sup>2</sup>



## GROUND DUPLEX - 3 BEDROOM

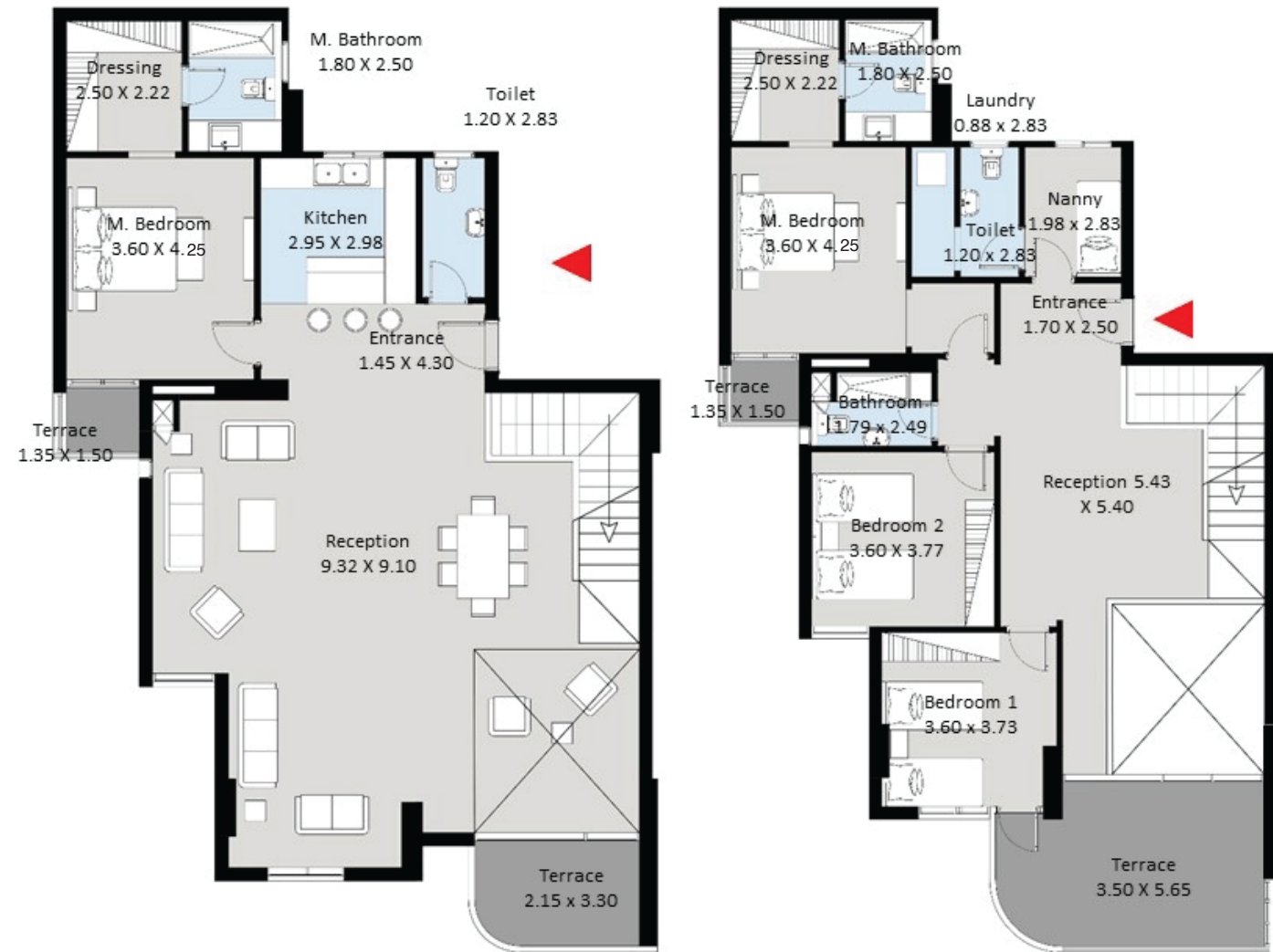


Ground Duplex  
Gross Area 286 m<sup>2</sup>  
Terrace Area 143 m<sup>2</sup>



## UPPER DUPLEX- 4 BEDROOM

### OPTION 1



Upper Duplex  
Gross Area 379 m<sup>2</sup>  
Terrace Area 32 m<sup>2</sup>

# UPPER DUPLEX- 4 BEDROOM

## OPTION 2



**Upper Duplex**  
Gross Area 379 m<sup>2</sup>  
Terrace Area 43 m<sup>2</sup>





## SUCCESS PARTNERS



Yasser Al Beltagy Architects (YBA) was established in 1995, in Cairo, Egypt. Led by the founder and chief architect Yasser AL-Beltagy.

YBA is a leading multidisciplinary design firm that covers a wide range of specialties and services: architecture, urban, landscape, and interior design.

Over the years, YBA has worked on more than 1,200 projects across continents.

We are all-inclusive enterprise offering various architectural services.



Studio Five was founded by a group of five architects that share a passion for design.

Our aim is to leave a fingerprint on the world of design through creating concepts and experiences.

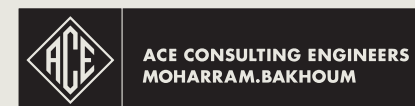
We do this through our range of services that include architecture, interior design and consulting.

We are an award winning design house with projects in Houston, London, Dubai and Riyadh. In less than 6 years, we have managed to expand our offices to Dubai, UAE as well as Houston, Texas, and are headquartered in Cairo, Egypt.



A highly creative and savvy brand builder, Amir has an accomplished entrepreneurial and corporate career history innovating concepts and launching numerous product categories and brands that create consumer, brand and business value.

He has extensive experience with high profile global fashion, retail, hospitality, banking, real estate, transportation, luxury goods, technology, media, entertainment, food and alcohol consumer facing brands.



ACE Moharram Bakhom is a multi-disciplinary engineering and project management consultancy company, based in Egypt.

They represent a unique selection of academic professionals and experienced engineers in fields such as architecture, planning, structural design, management, surveying, and electro-mechanical installations among many others.

Their reputation has enabled the firm to be involved in numerous multi-disciplinary mega projects, in more than 30 countries in the Middle East, Africa, Asia and Eastern Europe.

# THE CURVE



DREAMED & DEVELOPED BY



CORNERSTONE  
DEVELOPMENT

|  19614



18 ALMAZA STREET, HELIOPOLIS



[WWW.CORNERSTONEDV.COM](http://WWW.CORNERSTONEDV.COM)



CORNERSTONE DEVELOPMENT



[CORNERSTONE.DV](https://www.instagram.com/cornerstone.dv)